

TERRITORY of PAPUA – Second Rates Period 1912 - 1921

Mail to Australia



(E) 1920, September 1, Cape Nelson to Adelaide, double 1d letter rate + 3d Registration fee.  
Backstamped Sydney 15.11.20 and Adelaide 17.11.20

A Post Office at Cape Nelson was proposed to open on 1 July 12,  
and a datestamp was prepared accordingly.  
The opening was cancelled, and rare use of the datestamp,  
probably by the Resident Magistrate, has been recorded on 3 covers.

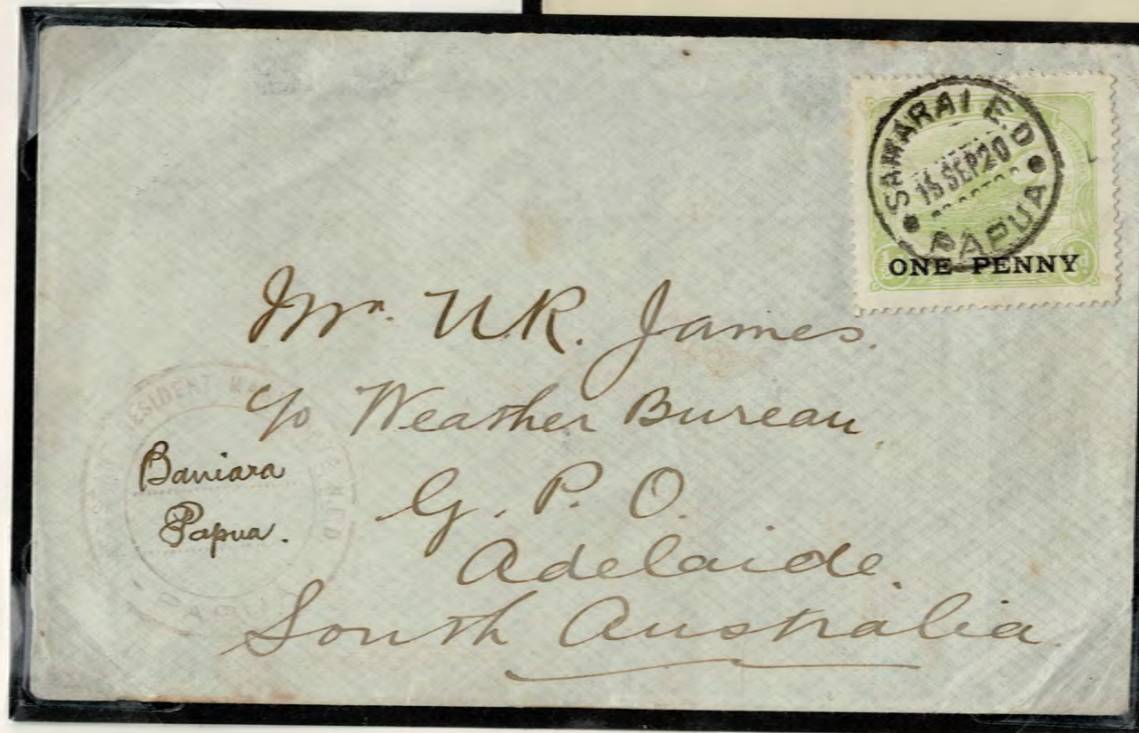
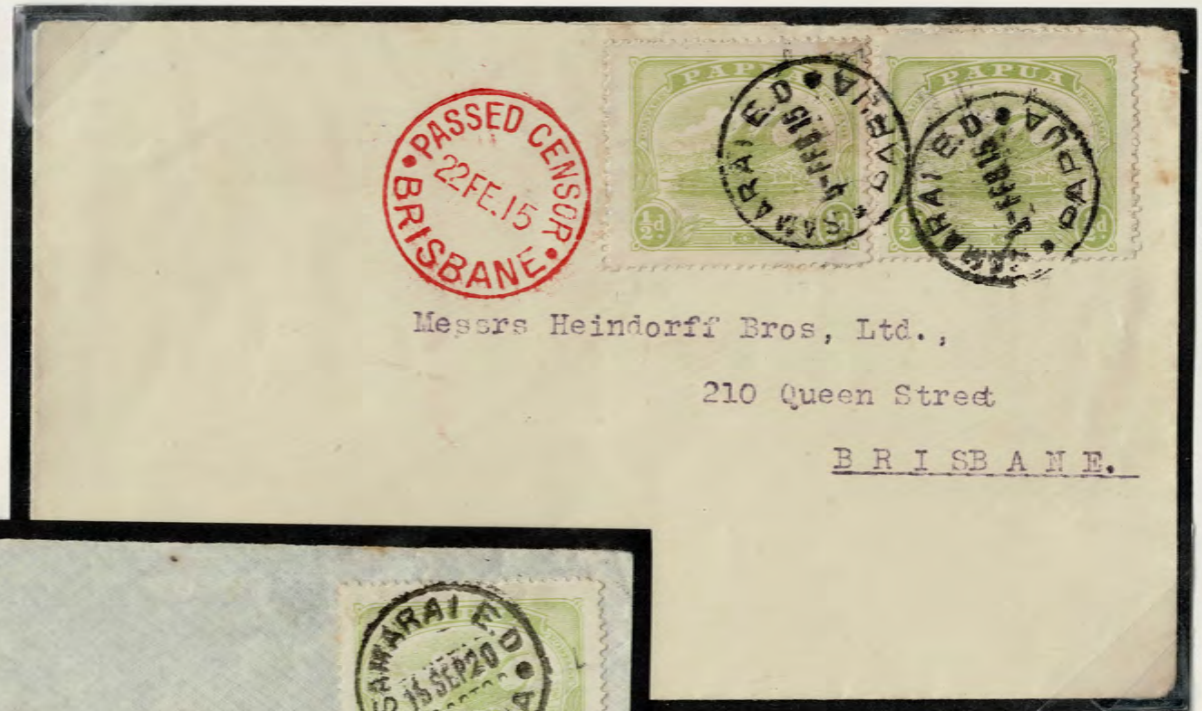


1915, June 30, Port Moresby to Sydney, 1d single letter rate.

Whitten Bros. Limited, Merchants, Papua imprint on reverse.

1915, February 5,  
Samarai to Brisbane,  
single 1d letter rate.

PASSED CENSOR, BRISBANE 22.2.15  
handstamp applied on arrival.



(E) 1920, September 16,  
Baniara to Adelaide via Samarai,  
single 1d letter rate.

The Post Office at Baniara closed on  
17 October 1918. Instructions were  
issued for Assistant Resident  
Magistrates to use their cachets  
to identify their mail.

This is the earliest of only three  
covers recorded from Baniara,  
all cancelled by hand.

1918, January 20,  
Ioma to Adelaide  
double 1d letter rate  
+ 3d Registration fee.

Backstamped Melbourne 11.3.18  
and Adelaide 12.3.18



TERRITORY of PAPUA – Second Rates Period 1912 - 1921

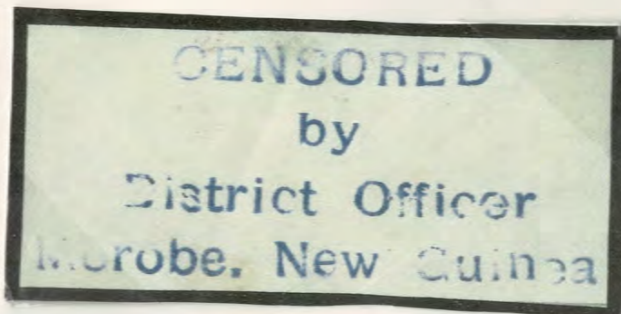
Mail to Australia



1915, January 8, Daru to Warwick, Queensland,  
1d postcard rate + 1d late fee.  
Thursday Island 9.1.15 handstamp applied in transit.

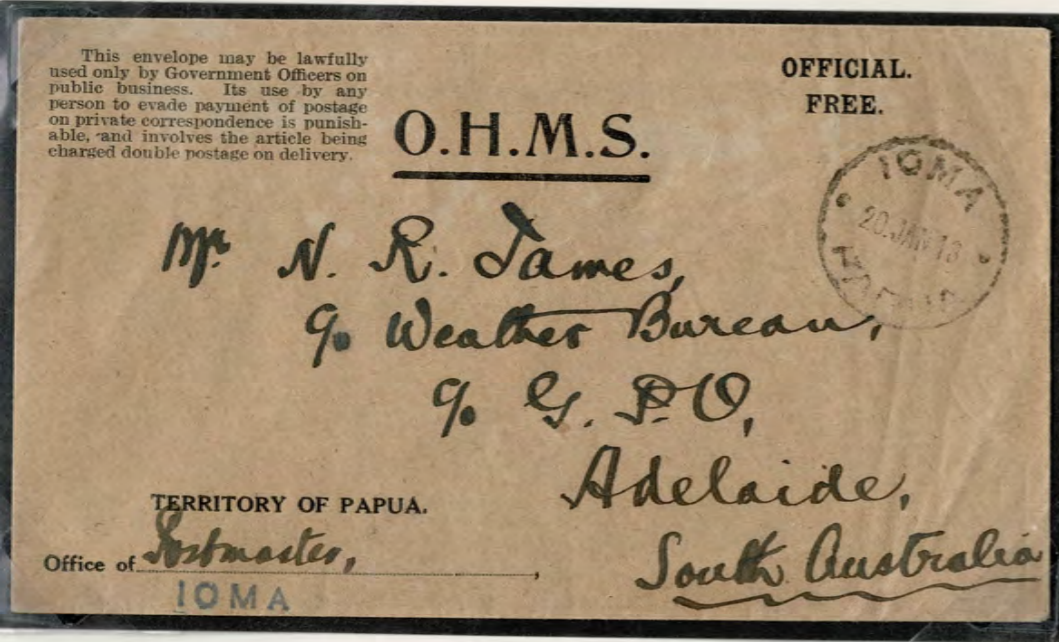
There were 4558 printed 1d UPU postcards sold for use  
to local and Australian destinations,  
first used 1 July 1901 at Port Moresby post office.

(E) 1915, November 11, missionary cover from Morobe  
in Occupied New Guinea to Alberton, Queensland,  
mss 2d and TAX handstamp applied at Samarai,  
oval T 2D handstamp applied at Brisbane,  
but tax postage apparently not collected. →



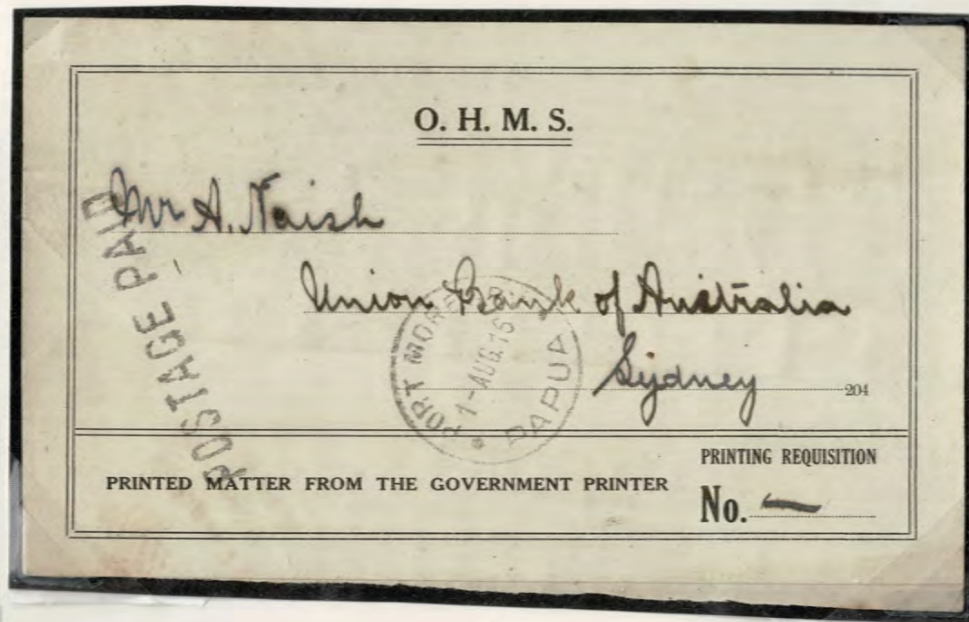
CENSORED/by/District Officer/Morobe, New Guinea  
handstamp on reverse of cover. →

Mail was carried overland by police runner from  
Morobe to Ioma, then by ship to Samarai.  
Censor tape was affixed at Brisbane.



1918, January 20, Ioma to Adelaide, Official mail free of postage.

This is the only recorded example of a Papuan penalty envelope  
and the only recorded example of the straight line IOMA handstamp.



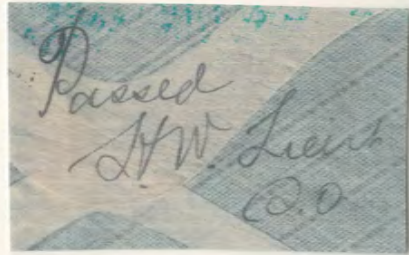
1916, August 1, Port Moresby to Sydney, Official label  
on parcel fragment, sent at unspecified printed matter rate.

Late usage of Queensland-type generic  
POSTAGE PAID handstamp at Port Moresby



1915, April 26, Kulumadau to Ararat, Victoria, single 1d letter rate.

Censored Mail



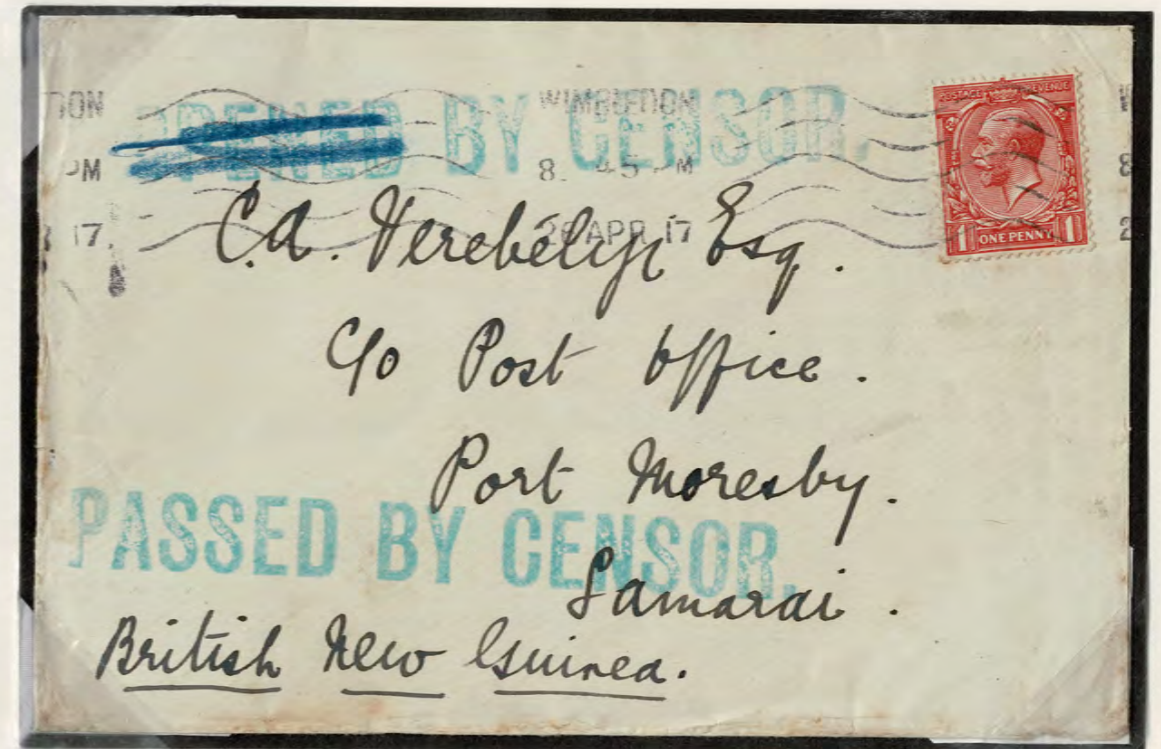
( 75 % Scan of reverse )

Military censor signature.



1916, August 28, Port Moresby to Melbourne, unstamped and untaxed.

**PASSED BY CENSOR** applied at Port Moresby.  
Military mail to patient at Royal Park hospital.



1917, April 26, Wimbledon, England to Port Moresby, single 1d Empire letter rate.

**OPENED BY CENSOR** (in error) and **PASSED BY CENSOR** handstamps,  
both applied at Port Moresby on arrival.



1916, August 9, Eastbourne, England to Port Moresby, double 1d Empire letter rate.

**PASSED CENSOR, BRISBANE 22.9.16** applied in transit.

**PASSED BY CENSOR** handstamp applied at Port Moresby.



1914, October 8, Brisbane to Port Moresby, single 1d Empire letter rate,  
redirected to Weltevreden, (Java), then to Poeloe Samboe, Netherlands East Indies, but not taxed.  
Backstamped Soerabaya 4.12.14, Weltevreden 6.12.14 and Tanjong Hakim 23.12.14

One of three recorded covers with "G R Found Open and Officially Sealed" tape,  
along with **OPENED BY CENSORS** handstamp, both applied at Brisbane.

Mail to Non British Empire



1918, October 18, Port Moresby to Rennes, France, single 2½d letter rate.



1918, September 15, Daru to Alabama, United States of America, single 2½d letter rate. PASSED BY CENSOR/THURSDAY ISLAND hand stamp and Brisbane 29.9.18 circular date stamp added in transit.



1915, May 8, Port Moresby to Cires les Mello, France, single 2½d letter rate + 3d Registration fee. Backstamped Singapore 12.6.15 and Cires les Mello 13.7.15



(E) 1915, April 15, Morobe, New Guinea to Queensland via Ioma, single 10pf letter rate. German New Guinea stamp mistakenly cancelled at Ioma, mss 5d To pay in crayon then added, being tax 2½d civilian letter rate from New Guinea under Australian administration + 2½d fine. Backstamped Samarai 3.5.15

PASSED CENSOR BRISBANE 17.5.15 circular date stamp applied on arrival.

TERRITORY of PAPUA – Second Rates Period 1912 - 1921

Mail to Non British Empire



← 1912, October 25,  
Port Moresby to Hamburg, Germany,  
1½d overseas postcard rate.

1919, December 15, Samarai to United States of America,  
single 2½d (underpaid 1½d) letter rate. →

TAX hand stamp applied at Port Moresby, with mss 3d  
being for 1½d deficient postage + 1½d fine.



1915, February 15, Port Moresby to Bern, Switzerland,  
single 2½d letter rate (underpaid 1d but not taxed) + 3d Registration fee.  
Backstamped Sydney 16.3.15 and Bern 13.4.15



← 1918, January 3, Port Moresby  
to United States of America,  
single 2½d letter rate.



1918, April 4, Port Moresby to United States of America,  
single 2½d letter rate (underpaid ½d but not taxed) →

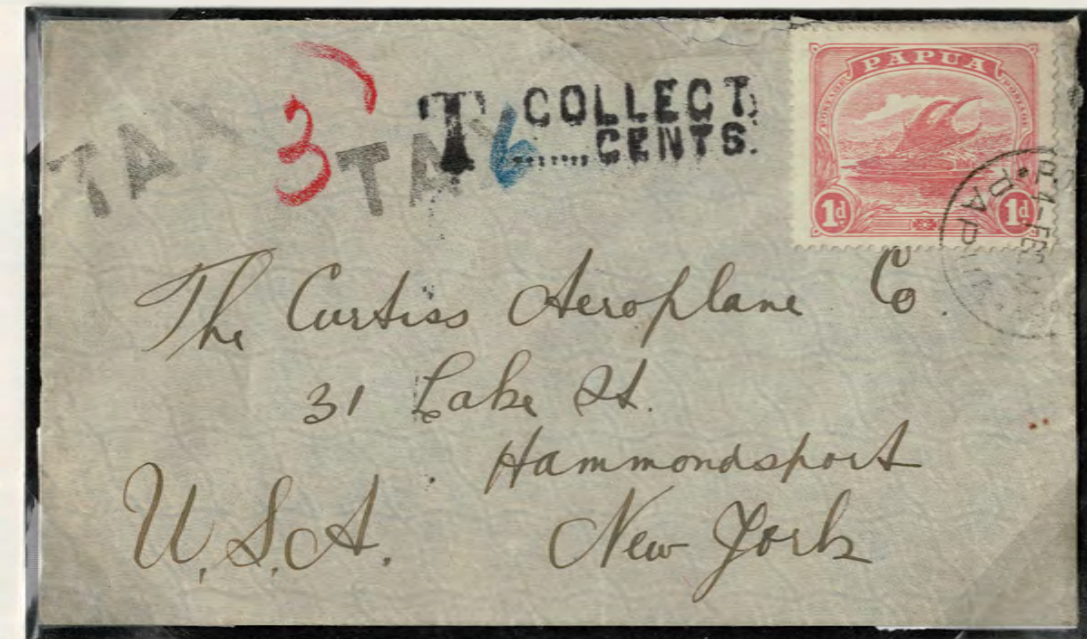
TERRITORY of PAPUA – Second Rates Period 1912 - 1921

Mail to Non British Empire



1914, November 18, Port Moresby to Springfield Mass., United States of America, single 2½d letter rate (1½d underpaid).

TAX 3d (1½d deficiency + 1½d fine) applied at Port Moresby, and DUE 6 CENTS applied at New York, where postage due stamps affixed.



1914, February 4, Port Moresby to New York, United States of America, single 2½d letter rate (1½d underpaid)

TAX 3d (1½d deficiency + 1½d fine) applied at Port Moresby, and T Collect 6 cents at New York.

Addressed to the Curtiss Aeroplane Company, whose planes later flew in the Territory.

1913, December 17, Samarai to Darmstadt, Germany, sextuplet 2½d letter rate + 3d Registration fee. Backstamped Darmstadt 25.1.14 arrival. →

Straight line REGISTERED and SAMARAI handstamps used during shortages of Registration labels.

Three combination examples are recorded thus far.

NORDDEUTSCHER LLOYD / BREMEN imprint on cover flap.

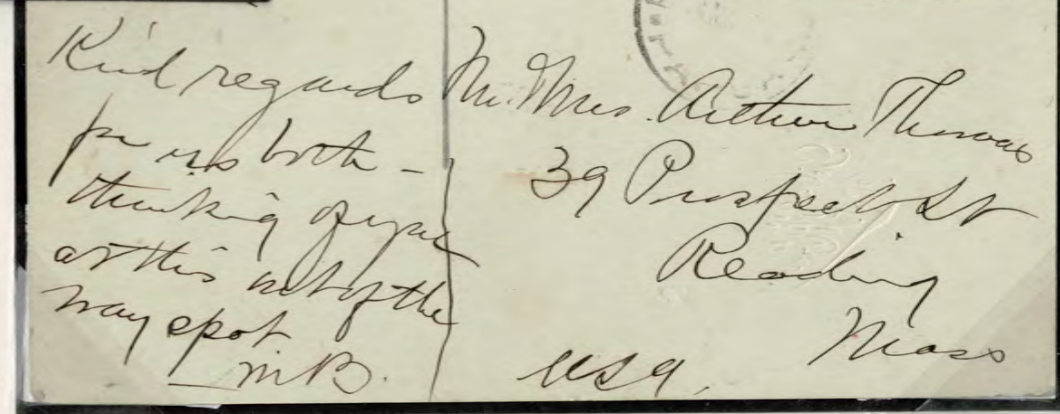


(E) 1916, May 29, Kulumadai to Kobe, Japan, single 2½d letter rate (½d overpaid) + 1d late fee. Backstamped Thursday Island 14.6.16 and Kobe 18.7.16

PASSED BY CENSOR hand stamp applied at Thursday Island.

Only recorded example of boxed LATE/FEE handstamp applied at Kulumadai.

A late fee applied when mail was too late to be sorted for the normal despatch, but could be posted in the ship's box or handed to the Captain or Purser of the departing ship.



1918, September 24, Port Moresby to Reading, Mass., United States of America, 1½d overseas postcard rate.

Card reverse is a real photo of a huge Lakatoi boat, as per the first British New Guinea stamp design.

**TERRITORY of PAPUA – Third Rates Period 1921 - 1924**

From 10 May 1921, letter rate became 2d to the British Empire, and 3d to other destinations.

The postcard rate became 2d to all destinations.

Mail from this brief rates period is very scarce.



1921, August 12, Port Moresby to Minneapolis, United States of America, single 3d letter rate plus 3d Registration fee. Backstamped Sydney 17.8.21, San Francisco 20.9.21 and Minneapolis 24.9.21



1922, December 13, Port Moresby to Sydney, single 2d letter rate. Croydon N.S.W. 2.1.23 arrival handstamp.

1922, August 3, Port Moresby to Massachusetts, United States of America, double 3d letter rate. →

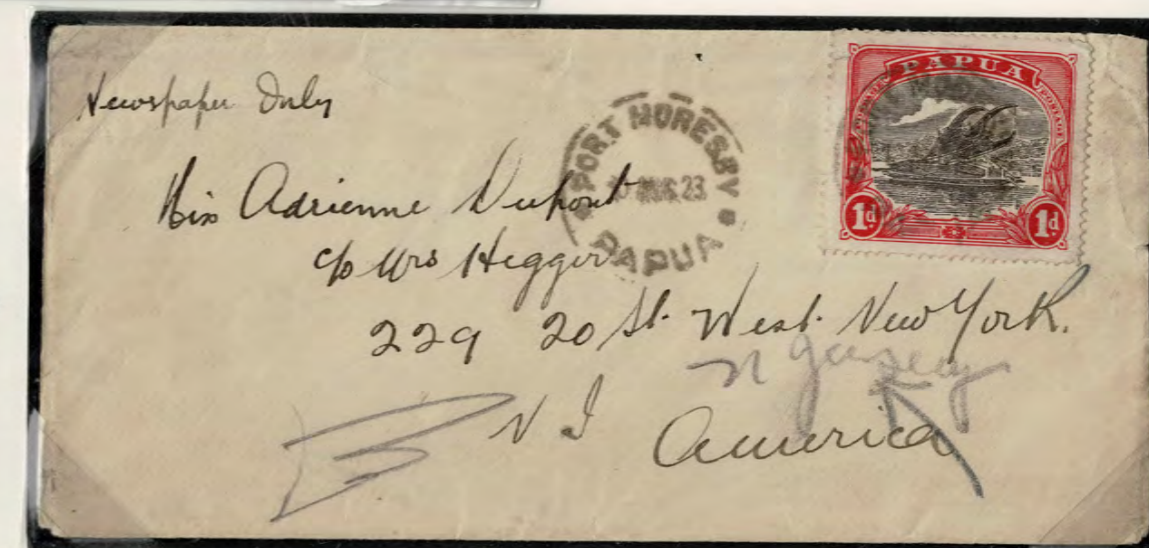


1923, September 23, Daru to Dresden, Germany single 3d letter rate. ←

1923, August 10, Port Moresby to New Jersey, United States of America. →

Handmade wrapper fashioned from an envelope, 1d newspaper rate.

LONDON MISSION/PORT MORESBY PAPUA embossed on reverse



TERRITORY of PAPUA – Third Rates Period 1921 - 1924

This period suffered from insufficient understanding of the rates, particularly by Native post office staff.

Accordingly, overpayment and underpayment without penalty, commonly occurred.



1922, January 11, Port Moresby to Amarillo, United States of America, double 3d letter rate + 3d Registration fee.  
Backstamped Sydney 19.1.22, San Francisco 28.2.22 and Amarillo 6.3.22.



1923, May 16, Port Moresby to Copenhagen, Denmark, 3d single letter rate (1d overpaid).  
Backstamped Kobenhavn 4.7.23



1921, November 23, Daru to Melbourne, triple 2d letter rate (1/2d underpaid, but not taxed) + 3d Registration fee.  
Backstamped Thursday Island 2.12.21, Brisbane 17.12.21 and Melbourne 21.12.21



1923, July 14, Port Moresby to Melbourne, single 2d letter rate (1d overpaid) + 3d Registration fee on uprated Postal Stationery envelope.

Only 1000 Registered Letter envelopes printed