

TWO PENCE MELBOURNE PRINTINGS

1902 - 1905 LITHOGRAPHIC PRINTINGS FROM STONES 1 TO 22 ON V OVER CROWN WATERMARKED PAPER

On the transfer of printing to the Victorian Printing Office the lithographic process was chosen to produce the relatively high volumes of 2d stamps required. Seven printings were made on V over Crown paper initially employing a pair of stones for two of the 1902 printings. For subsequent printings two pairs of stones were employed. The January 1902 printing was 42,000 sheets and December 1902 printing was 40,000 sheets. For the other five printings to May 1905 around 20,000 sheets per pair of stones proved to be the useful life of the stones.



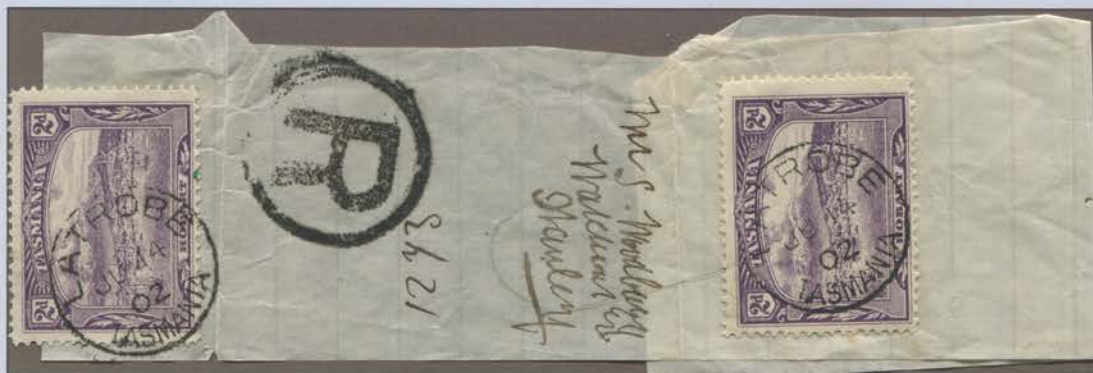
January 1902 Stones 1,2 showing marginal cross



September 1902 Stones 3,4.



May 1903 Stones 7,8.



1902 (June 14) Latrobe to Stanley meeting 1d packet rate and registration.



15 January 1902
Earliest recorded date

**TWO PENCE MELBOURNE PRINTINGS
1902 - 1905 LITHOGRAPHIC FLAWS & SHADES FROM STONES 1 TO 22**

The lithographic printings produced a number of flaws resulting from creasing of the transfer during production of the stones as well as colour flaws caused by foreign material adhering to the transfer medium during production. Shades varied considerably between and within printings with some inking problems experienced in later printings

Transfer flaws and inking flaws



Stone 1/35 & 36 'Parabola' flaw through mountain



Stone 8/56 Balloon flaw in sky at right



Unpositioned White flaw through sky at right



Stone 15/53 Creased transfer 'across upper right corner .



Stone 2/3 Creased transfer 'X' flaw through centre



Stone 1/25 Creased transfer across lower left

Stones 19 & 20 'Dry Etch' Ink clogging.



1902 to 1905 Shade variation.



1902 deep blackish-violet



1903 reddish-violet



1904 deeper purple



1905 reddish purple



There is wide shade variation throughout these printings and even within the printings from each pair of stones. Dated copies with clear postmarks are shown to give a guide to the variations found.

TWO PENCE MELBOURNE PRINTINGS

1906 - 1907 LITHOGRAPHIC PRINTINGS FROM STONES 23 TO 28 ON CROWN A WATERMARKED PAPER

New paper was introduced for the September 1905 printing of 51,525 sheets on stones 23 & 24. Stones 25 & 26 were made for a February 1906 printing of 57,500 sheets and the final lithographic printing of 33,800 sheets in October 1906 used stones 27 & 28. 8,929,500 stamps were printed on this paper with a monthly usage of 430,000.



October 1906 Stones 27,28.



February 1906 Stones 25,26



September 1905 Stones 23,24



27 October 1905
Earliest recorded date



1907 (May 2) posted at Woodstock paying the Parcel Post rate for a 2 lb. parcel.

**TWO PENCE MELBOURNE PRINTINGS
1906 - 1907 LITHOGRAPHIC FLAWS AND SHADES FROM STONES 23 TO 28**

The quality of printing on this paper improved as did the volume of sheets produced from each pair of stones. There were still some prominent lithographic flaws present on the stones.

Lithographic flaws



Stone 23/5 white circle beside TAS.



Unpositioned
Creased transfer
through HOBART



Stone 26/55 Damaged
lower left corner



Stone 27,28 Major retouch in sea near ship.

1905 & 1906 Shade variations.



Stones 23,24 deeper
violet



Stones 25,26 paler
violet



Stones 27,28 pale
reddish-violet

**TWO PENCE MELBOURNE PRINTINGS
1907 - 1908 ELECTROTYPED PRINTINGS FROM ON CROWN A WATERMARKED PAPER**

After four years of lithographic printing for the 2d value the Commonwealth Printer changed to the electrotype method to produce the high volumes required for the letter rate stamp. Printings were made in March 1907 (17,000 sheets), August 1907 (20,000 sheets), January 1908 (60,000 sheets) and September 1908 (60,000 sheets). 9,420,000 stamps printed in this period indicated a monthly usage of 392,000.



January 1908 printing in bright violet with marginal cross. Watermark vertical. Scarce



March 1907 Printing in dull violet. Watermark sideways.



1908 (November 4) Little Swanport to Hobart at inland rate.



29 August 1907
Earliest recorded date



Plate 2/4 'Bombed ship'
repair

TWO PENCE MELBOURNE PRINTINGS

1909 - 1910 ELECTROTYPED PRINTINGS FROM ON CROWN A WATERMARKED PAPER

The printings in 1909 and 1910 were notable for their shades and for printings in poor ink which produced stamps that the philatelic world initially thought were a new lithographic printing. Printings occurred in March 1909 (40,000 sheets), December 1909 (60,000 sheets) and June 1910 (56,000 sheets). A total of 9,360,000 stamps indicated a monthly usage of 425,000 stamps.



January 1910 printing in reddish violet.
Watermark sideways.



June 1910 printing in bright violet. Watermark upright and inverted.



June 1910 Printing in bright lilac shade.
Watermark sideways.

January 1910 Printing on dirty plates & poor ink.



2 February 1910
Earliest recorded date



7 February 1910
Latest recorded date

June 1910 Shade variance within the printing.



September 1910 reddish bright violet.



January 1911 bright violet.

TWO PENCE MELBOURNE PRINTINGS
1909 - 1910 ELECTROTYPED PRINTINGS USAGE

The 1910 printings exhibit a wide variation in shades and represent the first printings of Tasmanian Pictorials carried out under J.B. Cooke's supervision. The shades used in the later printing is similar to the shade used on the stereographed printings which followed.



1910 (September 10) Gretna to Hobart at the inland letter rate.



1910 (April 2) Pelham to Hamilton at inland letter rate and registration. 1d late fee and endorsed 'Too Late'

**TWO PENCE MELBOURNE PRINTINGS
1911 - 1912 STEREOTYPED PRINTING ON CROWN OVER A WATERMARKED PAPER**

Cooke chose to print further supplies of the 2d using the stereotyped method. Using a photographic image taken from the De La Rue plate a four-unit block was prepared. From this a unit of thirty was produced and then two plates of 60. Two die types can be identified in the master plate. One printing of 100,000 sheets was completed in January 1911. A large quantity was later overprinted ONE PENNY and remaining stocks (26,594 sheets) destroyed in February 1915.



CA monogram and marginal plate dot.



Master plate flaws seen on two stamps:
A. white scratch above left value tablet & upper left corner rounded.
B. These flaws are absent.

This block is BA over AB



Plate 1/37 White flaw under value tablet.
This flaw became more prominent as the plate wore.



Reversed watermark



27 January 1911
Early date of use

**TWO PENCE MELBOURNE PRINTINGS
1911 - 1912 STEREOTYPED PRINTING PLATE FLAWS & USAGE**

The stereotyped plate was made of a relatively soft metal and showed considerable signs of wear. Nevertheless it was capable of producing a greater volume of sheets than the earlier plates used

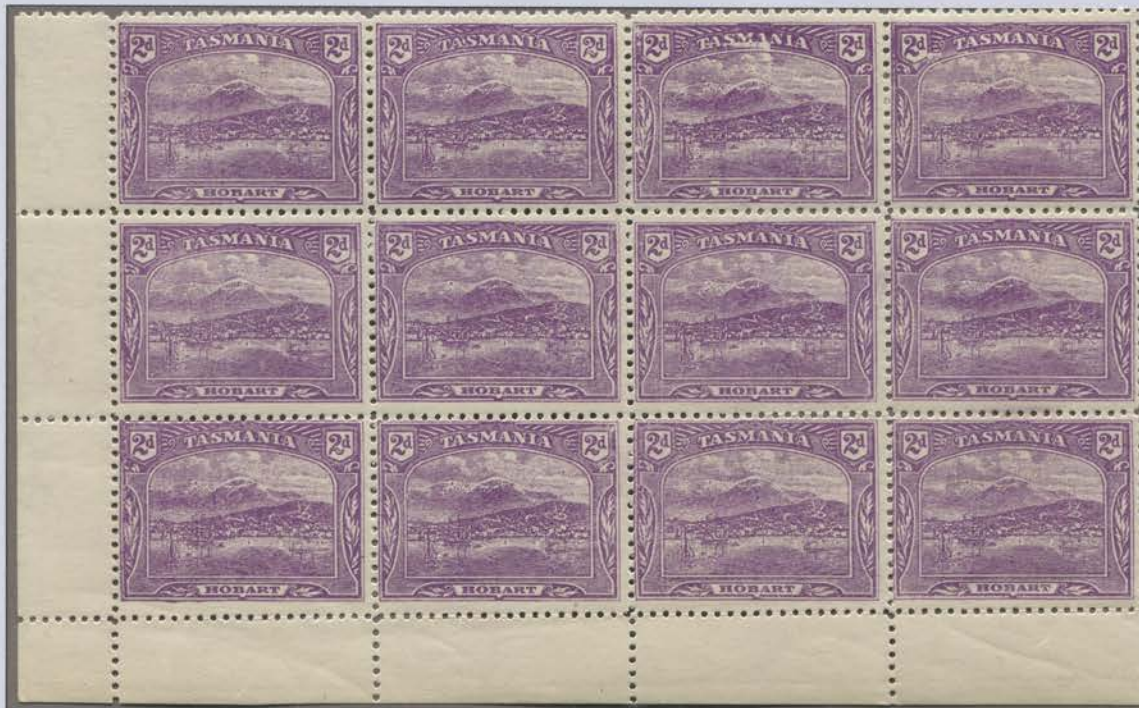


Plate 2 positions 45 & 46 showing worn right frame and damage around TASMANIA & around left 2.



Plate 2 position 10 showing Damage to upper frame.



1913 (July 7) paying Interstate Parcel Post for parcel between 1 and 2 lbs.

TWO PENCE MELBOURNE PRINTINGS
1911 - 1912 STEREOTYPED PRINTING USAGE

The stereotyped plate was made of a relatively soft metal and showed considerable signs of wear. Nevertheless it was capable of producing a greater volume of sheets than the earlier plates used

R. No. 6.

No. _____

Post Office of
Administration de la

**ACKNOWLEDGMENT OF DELIVERY
AVIS DE RÉCEPTION**

of a Registered Letter addressed to
d'un objet recommandé adressé à } Mr. William Dwyer
Tunnack

Stamp of Office of origin.
Timbre du Bureau d'origine.

The undersigned acknowledges that a Registered Article addressed as
Le soussigné déclare qu'un objet recommandé a l'adresse susmentionnée

above and sent by
et provenant de* } Mr. Clyde Gibson
Oatlands

was duly delivered the
a été dûment livré le _____ 19

Stamp of Delivering Office.
Timbre du Bureau distributeur.

Signature of the Addressee
Signature du destinataire† William Dwyer

Signature of the Chief of the Delivering Office.
Signature du chef du Bureau distributeur† } J. A. O'Brien

The name and full address of the Sender of the Registered Article must be entered in this form at the Issuing Office.
* Le nom et l'adresse complète de l'expéditeur de l'objet recommandé doivent être inscrits sur cette feuille par le Bureau d'origine.

The Acknowledgment must be signed by the addressee, or, if the postal regulations of the country of destination permit, by the Postmaster of the Delivering Office. It should then be enclosed in an envelope and returned, registered, by first mail to the Office of origin.

† Cet avis doit être signé par le destinataire, ou, si les règlements du pays de destination le permettent, par le Chef du Bureau distributeur, puis être mis sous enveloppe et renvoyé sous recommandation par le premier courrier.

B10969

1911 (February 2) paying the 2½d fee applicable for an Acknowledgement of Delivery for a registered article from Oatlands to Tunnack

**TWO PENCE MELBOURNE PRINTINGS
1911 - 1912 STEREOTYPED PRINTING SURCHARGED ONE PENNY**

With the introduction of Uniform Penny Postage on 1 May 1911 it was decided that a part of the considerable stocks of 2d stamps should be surcharged to meet the demand for the 1d rate. 16,000 sheets were recalled from Hobart and 27,431 sheets taken from Melbourne stocks for surcharging. 2,605,860 stamps were overprinted and despatched to Hobart between 9 October and 13 November 1912.



JBC monogram.



CA monogram.



22 October 1912 - Earliest recorded date of use.

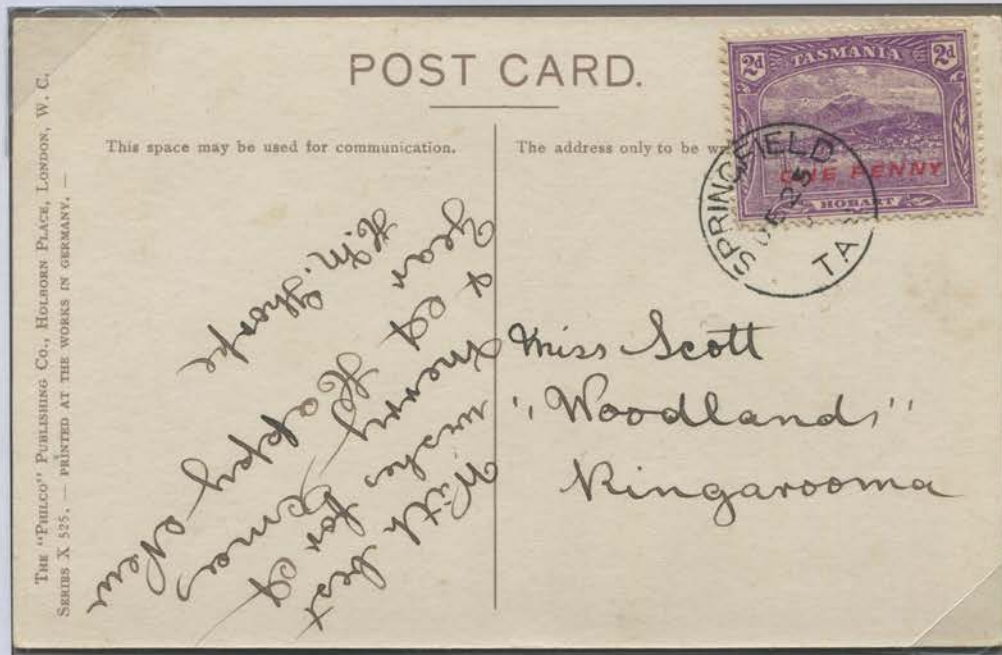
Forged overprints on the electrotyped printing.



Forged overprints applied to 1909 printings of the 2d and with 1909 postmarks.

**TWO PENCE MELBOURNE PRINTINGS
1911 - 1912 STEREOTYPED PRINTING SURCHARGED ONE PENNY USAGE**

Uniform Penny Postage stimulated considerable demand for 1d stamps and the supplies of 1d and 2d surcharged ONE PENNY lasted until mid January 1913 when the Kangaroo stamps became available in Tasmania.



1912 (December 25) Springfield to Ringarooma at postcard rate.



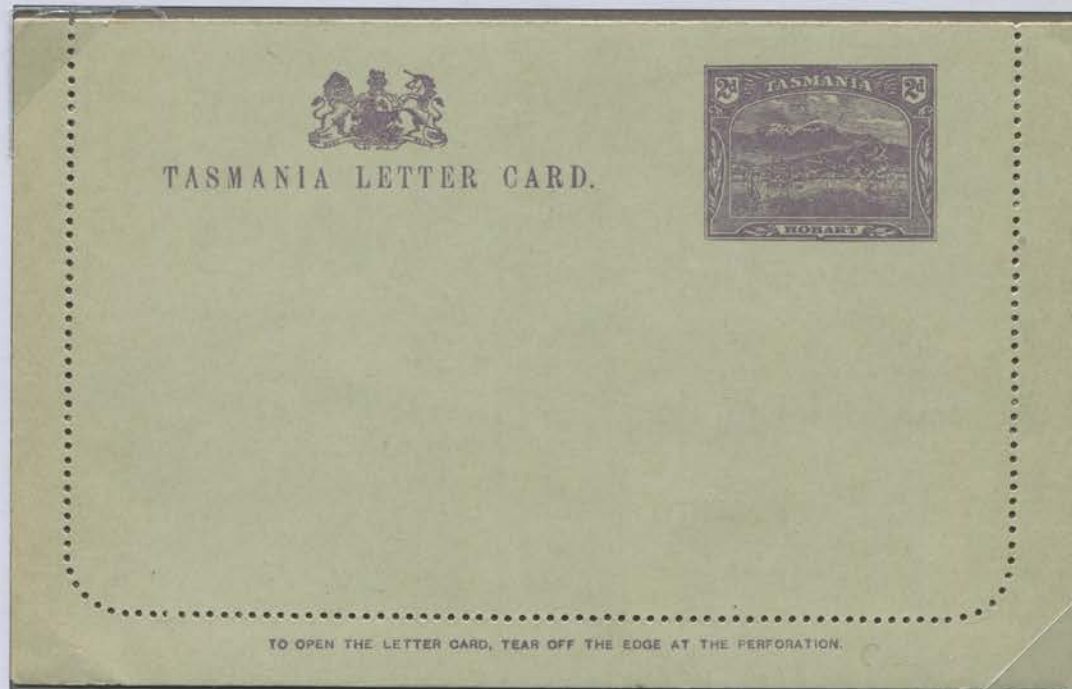
1912 (November 10) Hobart to Mauritius at the foreign letter rate.
Mauritius had not yet been included in the list of destinations eligible for the British Empire rate

**TWO PENCE DESIGN USED ON THE LETTER CARDS
1903 PICTORIAL SCENES & 1907 LAKES & MOUNTAINS SCENES PRINTED IN MELBOURNE**

With the transfer of all Tasmanian postal issues printing to Melbourne the Victorian Government Printer produced a printing of the Scenes letter cards on grey stock. A new series of six was produced in 1907 featuring popular scenes of Tasmanian Lakes and mountains, again based on J.W. Beattie photographs.



2d lettercard with scene of Launceston printed in Melbourne on grey stock. 2d impression in violet.



1907 series letter card with scene of Mount Olympus in red. 2d impression in pale violet.

The scenes on the 1907 series were:

Mount Ida and Lake St. Clair - from North Shore; Lake Agnew and Cradle Mountain - from South West; Mount Gould - Lake Marion; Lake George - Mount King William; Mount Olympus - from North end of Lake St. Clair and A Peep at Barn Bluff from Lake Windemere. The scenes were initially in grey and then in a variety of colours and were forerunners to the letter cards printed for the Commonwealth.

**TWO PENCE DESIGN USED ON THE LETTER CARDS
1911 LAKES & MOUNTAINS SCENES SURCHARGED ONE PENNY IN MELBOURNE**

The introduction of Uniform Penny postage on 1st May 1911 necessitated the overprinting of remaining stocks of letter cards. This was performed in two operations with the surplus stocks held in all the Tasmanian Post Offices returned to Melbourne and yet to be distributed in Melbourne overprinted at an angle of 20° and the uncut printing all held in Melbourne with scenes in reddish brown overprinted at 40°. All these cards are scarce.



1911 2d lettercard with scene of Lake George in black and 20° overprint.



1911 2d lettercard with scene of Mount Gould Lake Marion in reddish brown and overprint at 40°.