

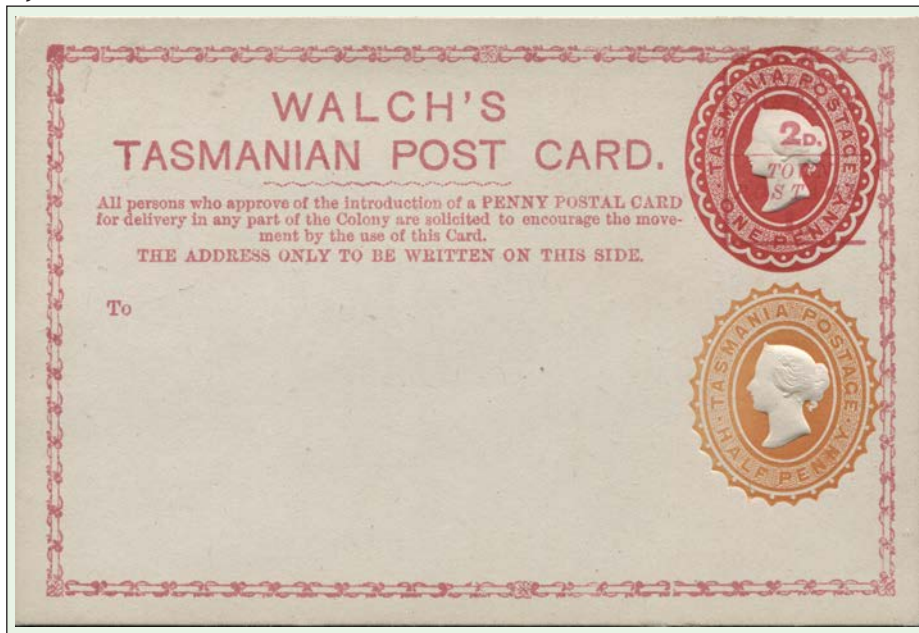
1891 - 1900 EMBOSSED POST OFFICE ISSUED & PRIVATE ISSUE POSTAL CARDS

EMBOSSING OF 1880 J.WALCH POST CARD & 1882 POST OFFICE ISSUED LITHOGRAPHED CARDS

Stocks of the first lithographic postal card printed in Hobart at The Mercury office were uprated with the 1/2d die to meet the foreign postcard rate. The Post Card prepared by J. Walch & Sons to demonstrate to the Government the need for a post card in the Colony was also additionally embossed with the 1d and 1/2d die.

Privately produced 1880 post cards

1880 issued J. Walch & Sons post card embossed with 1d and 1/2d dies to meet the foreign post card rate.



Embossed 1882 postal cards



There is no evidence that these cards were officially produced and used examples are scarce. With Australasian membership of the UPU occurring in October 1891 it is reasonable to assume that these were produced around that time with the introduction of the foreign postcard rate.

Embossed 1/2d in pale brown orange beside stamp imprint

Embossed 1/2d in orange inverted at lower left.



1892 (September 19) New Norfolk to Ireland at foreign postcard rate embossed 1/2d in orange below stamp imprint.

1891 - 1900 EMBOSSED POST OFFICE ISSUED POSTAL CARDS

1882 ISSUE DE LA RUE POSTAL CARDS

Official issue postal cards bearing an embossed 1/2d to meet the UPU postcard rate were given catalogue status by Stanley Gibbons in 1892. Subsequently both Higgins & Gage and Robson Lowe in their publications have concluded that they are printed to private order issues.

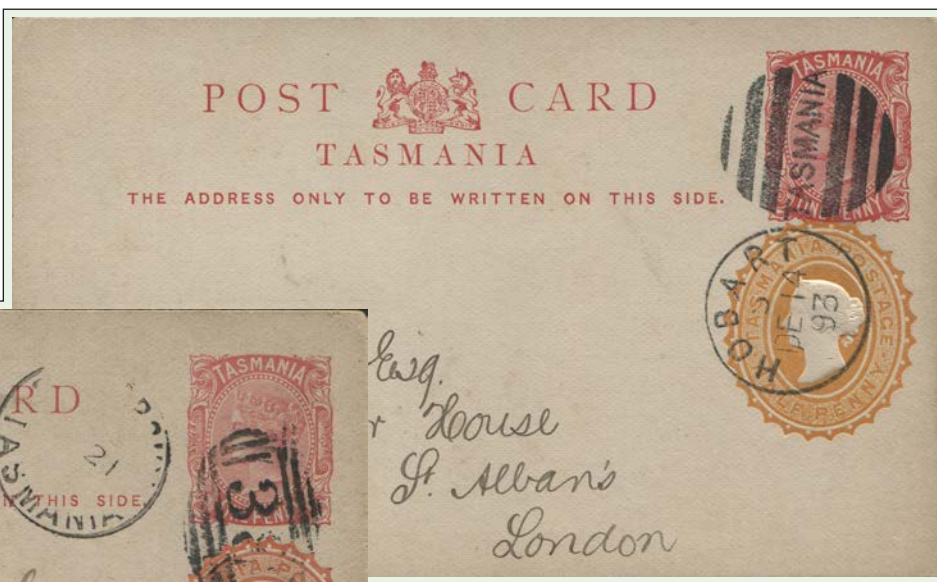


Orange embossing.

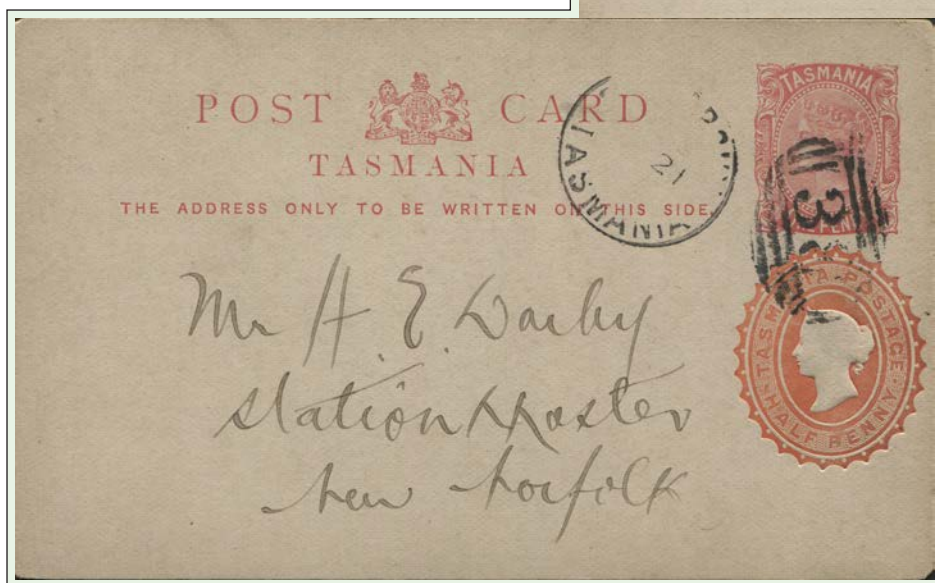


Brown orange embossing.

All recorded embossings on the De La Rue cards printed in London show the 1/2d value below the imprinted 1d. value.



Yellow orange embossing used 1893 (December 14) Hobart to London at postcard rate.



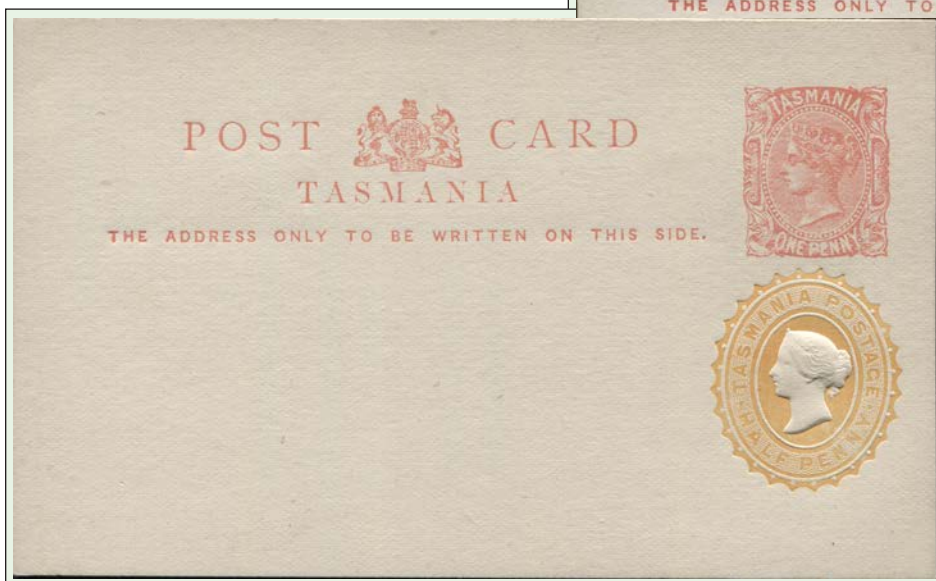
Orange embossing used 1892 (November 22) at New Norfolk for commercial purposes but overpaying the postcard rate.

1891 - 1900 EMBOSSED POST OFFICE ISSUED POSTAL CARDS

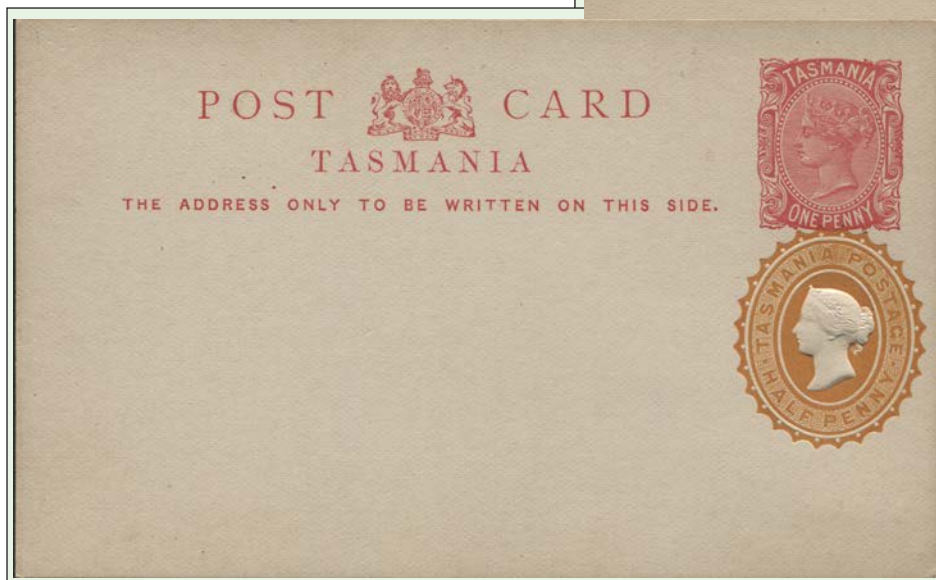
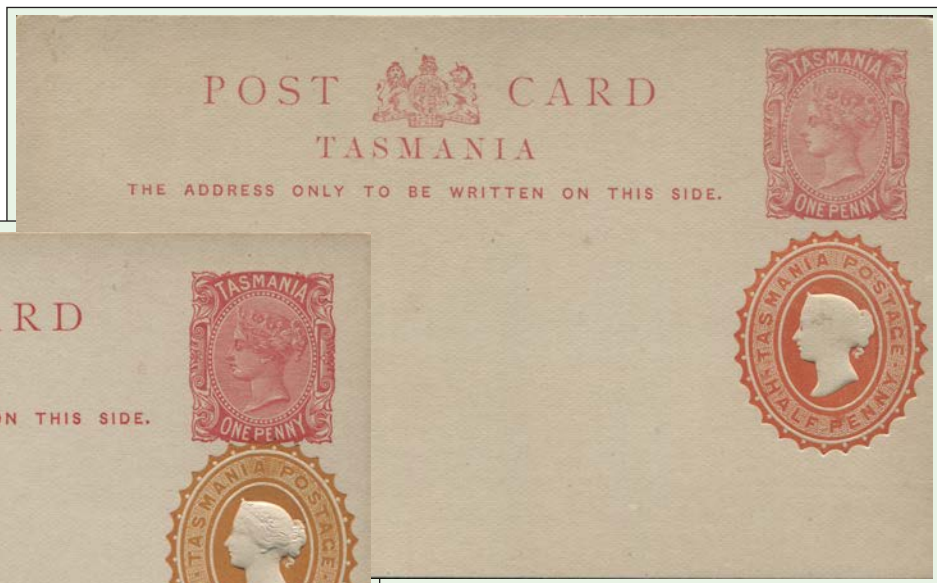
1885-1890 LOCALLY PRINTED POSTAL CARDS

The status of Post Office issued postal cards with additional embossing was raised in the November 1892 issue of *Vindin's Philatelic Monthly*. They quote a letter received by Basset Hull from the Secretary of the Post Office stating in part "... Regarding the 1½d Post Cards, no such have been issued from this Department. It is evident that the 1½d cards catalogued by the English papers are unofficial, and must have been manufactured without authority from headquarters."

Yellow-orange embossing beside 1d.



Pale Yellow-orange embossing below 1d.



Orange embossing below 1d.

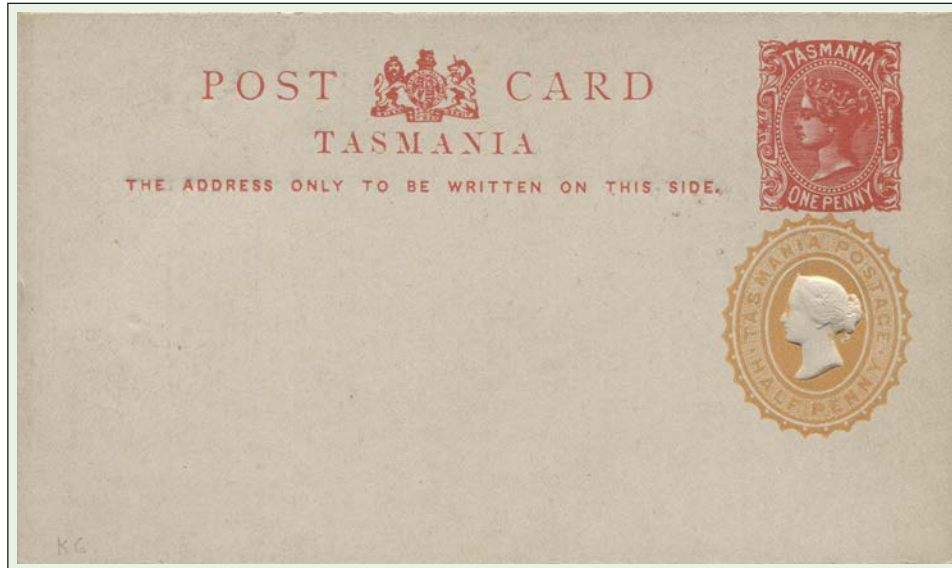
Brown-orange embossing below 1d.

1891 - 1900 EMBOSSED POST OFFICE ISSUE POSTAL CARDS

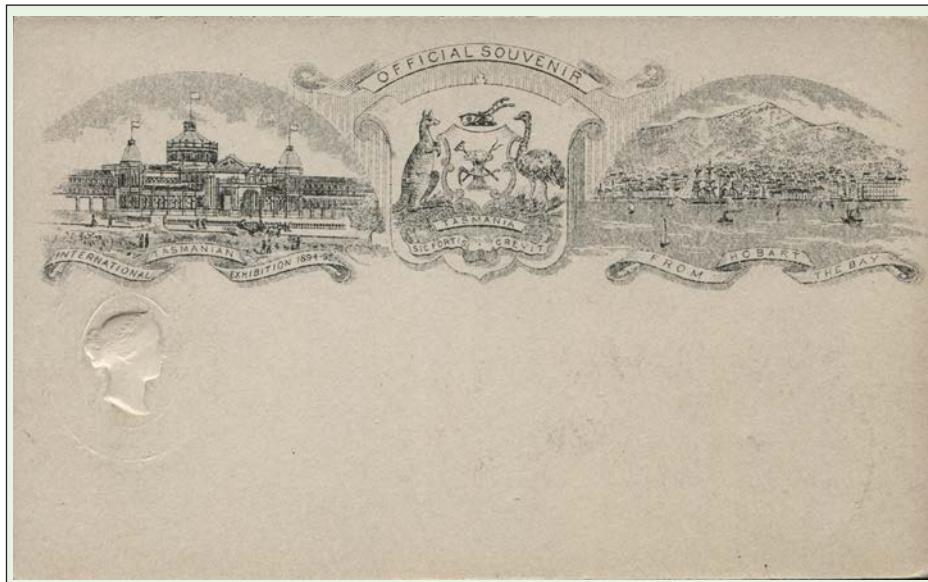
1893 TASMANIAN INTERNATIONAL EXHIBITION POSTAL CARDS

A quotation in the *Stamp Collector* by W.J. Hardy and E.D. Bacon in 1898 states "A philatelist recently visiting Tasmania was struck with the extreme 'obligingness' of the postal department there in the manner of creating 'varieties' and with the wide-spread belief that nothing pleased a collector as much as a new stamp.' He noticed a parcel of the current (1895) 1d postcards, with an additional halfpenny stamp impressed upon them which had been 'made to order' for a Continental firm, and which were about to be posted separately in order to have been duly 'used'.

The cards referred to were for Paul Kiderlen and comprised those with and without the 1894 Tasmanian International Exhibition design on the back. they were mainly restricted to 1894 use.



½d Yellow-orange embossing below 1d impression.



½d Pale Yellow-orange embossing below 1d used 1894 (June 23) Hobart to Germany at foreign postcard rate.

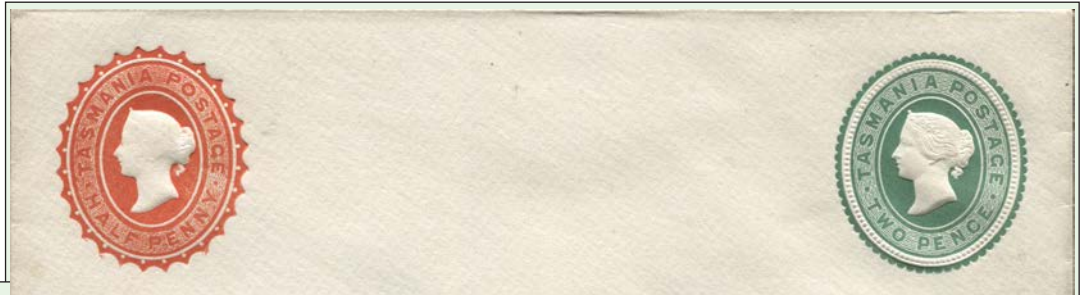
These issues are included (along with those on previous pages) as the embossing was carried out by the Post Office in accordance with their Regulations as a service to the private individuals who commissioned the order.

1883-1900 EMBOSSED POST OFFICE ISSUE ENVELOPES

1892-96 ADDITIONAL 1/2D IN ORANGE AND GREEN

In 1892 a small stock of the 1883 2d envelope were embossed with the 1/2d die in orange and again in 1895-96 this time in green contrary to Regulations which required that it be in orange.

1/2d orange embossed
upper left corner



1/2d Yellow-green
embossed upper
left corner



1892 (September 1) New
Norfolk to Halifax at 2 1/2d
overseas letter rate.



1896 (October 3) Launceston
to Sydney overpaying the rate
by 1/2d.

1883-1900 EMBOSSED POST OFFICE ISSUE ENVELOPES

1892-94 ADDITIONAL ½D IN ORANGE & ORANGE-YELLOW

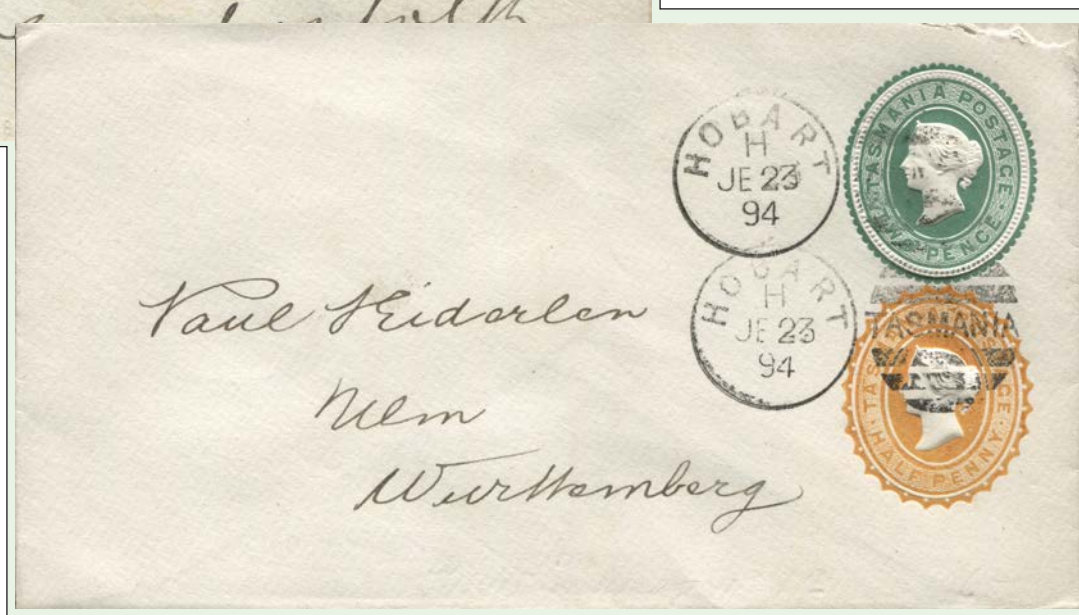


½d orange embossed alongside 2d



1892 (November 22)
Glenorchy to New
Norfolk overpaying
the rate by ½d.

Orange yellow embossing below 2d
1894 (June 23) Hobart to Germany at
2½d overseas letter rate.



1892-1912 STAMPED TO PRIVATE ORDER ENVELOPES

½D SINGLE EMBOSSINGS

The envelopes are recorded used from 1892 when there was no current need for that rate. They perhaps best represent the efforts of collectors to create varieties and many distinct envelope types are known. Examples are shown for the sake of completeness and the focus throughout this section is on usage of the envelopes.

The range of envelope sizes and colours is extensive and a selection is shown only to demonstrate the range of envelopes that were embossed.



½d yellow-orange
on cream stock.



½d red on
green stock.



½d red on
blue stock.

1892-1912 STAMPED TO PRIVATE ORDER ENVELOPES

USAGE OF THE 1/2D SINGLE EMBOSSINGS



1892 (September 12) River Plenty to New Zealand underpaid but untaxed.

It is possible that the postal clerk mis-read the denomination.



1892 (April 27) Launceston to Redfern uprated 1/2d to meet the 1d book Post rate.



1913 (May 10) East Devonport to Switzerland uprated 2d to meet the foreign letter rate.

1892-1912 STAMPED TO PRIVATE ORDER ENVELOPES

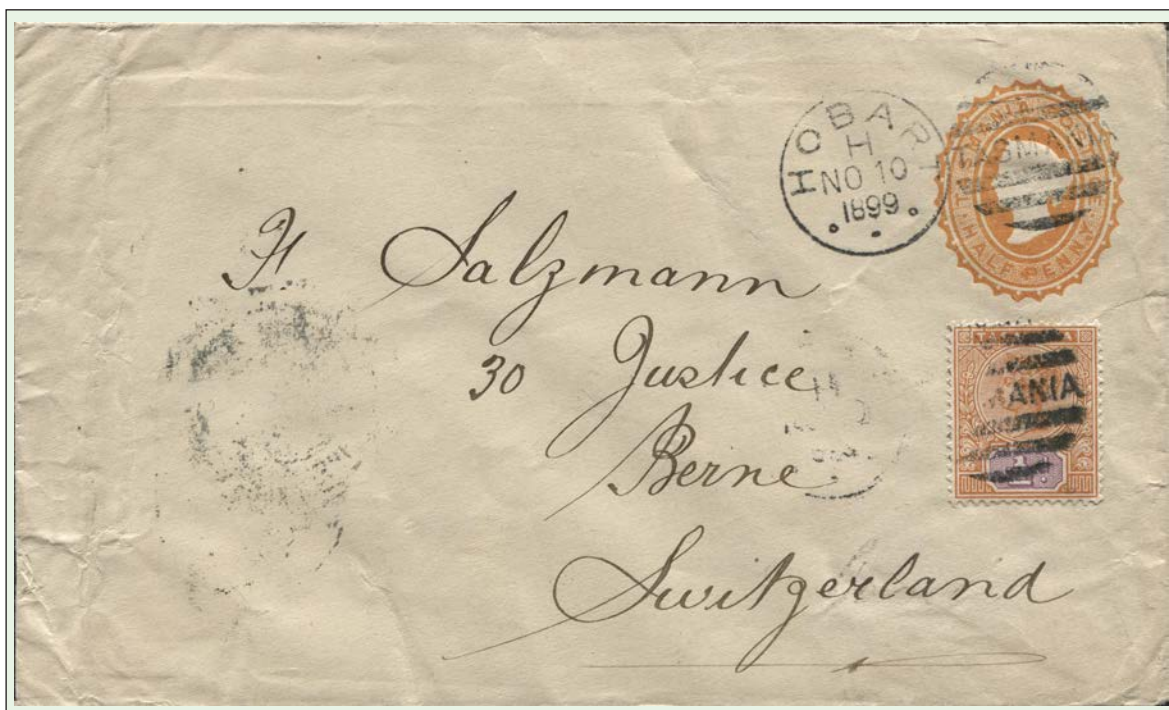
USAGE OF THE ½D SINGLE EMBOSSINGS

In a report in the 'London Philatelist' in 1892 it states "...Mr Basset Hull sends us some of the private issues... we have been informed that, of these, many charming varieties are being offered for sale in various quarters. Mr Basset Hull states that the Tasmanian authorities do not intend to have any more of this trash printed. It is a pity they did not take this resolution earlier. Collectors will have a sorry return for any investments they make in this sorry stationery."

Nevertheless the stationery was valid for postage hence the focus on used examples.



1892 (April 22) Hobart to Sydney uprated with additional ½d to meet 1d per 4 oz. Book Post rate.
Early use of the ½d envelope



1899 (November 10) Hobart to Switzerland underpaying foreign letter rate. Untaxed

1892-1912 STAMPED TO PRIVATE ORDER ENVELOPES

1D SINGLE EMOSSINGS

*1d red on
brown stock*



*1d red on
blue stock*

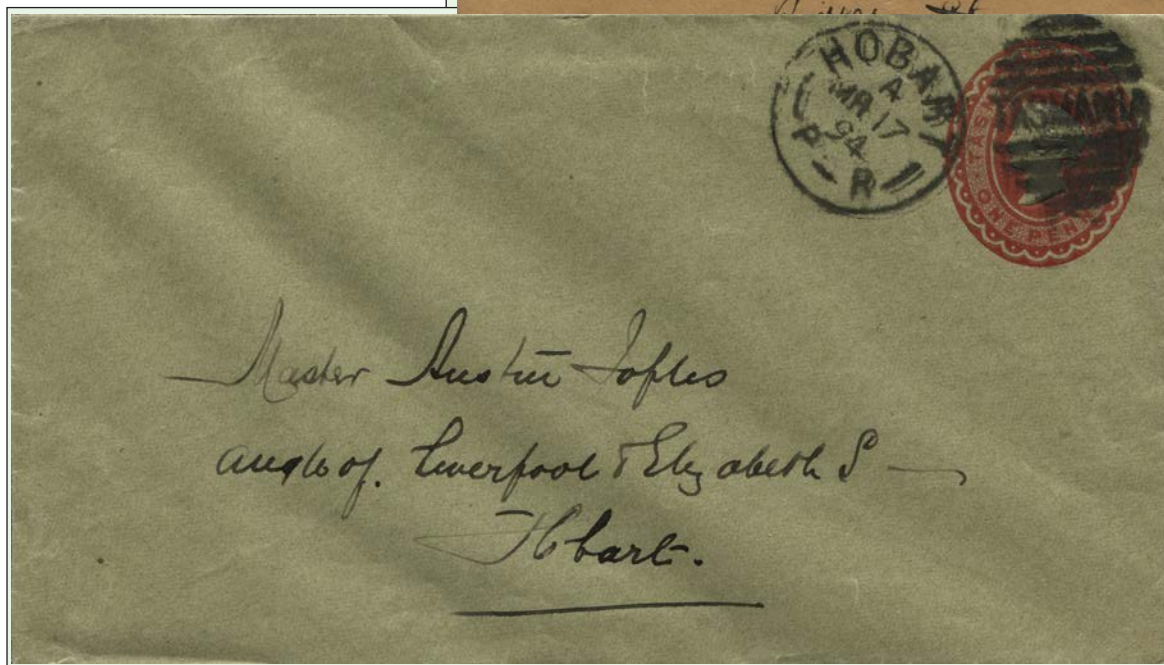


*1d red on
grey stock*

1892-1912 STAMPED TO PRIVATE ORDER ENVELOPES

1D SINGLE USAGES

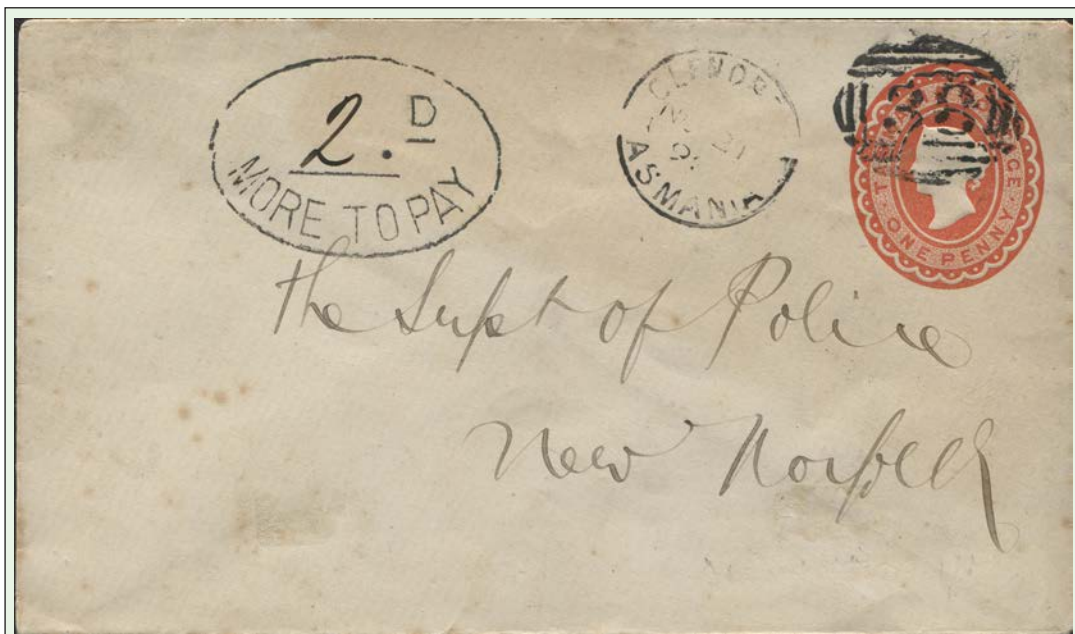
1892 (April 22) Hobart to Sydney at printed matter rate. Orange red shade on yellow stock.



1894 (March 17) Hobart town letter use on green stock.

1892 (November 21) Glenorchy to New Norfolk underpaid for 2d country letter and taxed double deficiency. Hobart transit marking of 22 Nov. and New Norfolk arrival of 25 November.

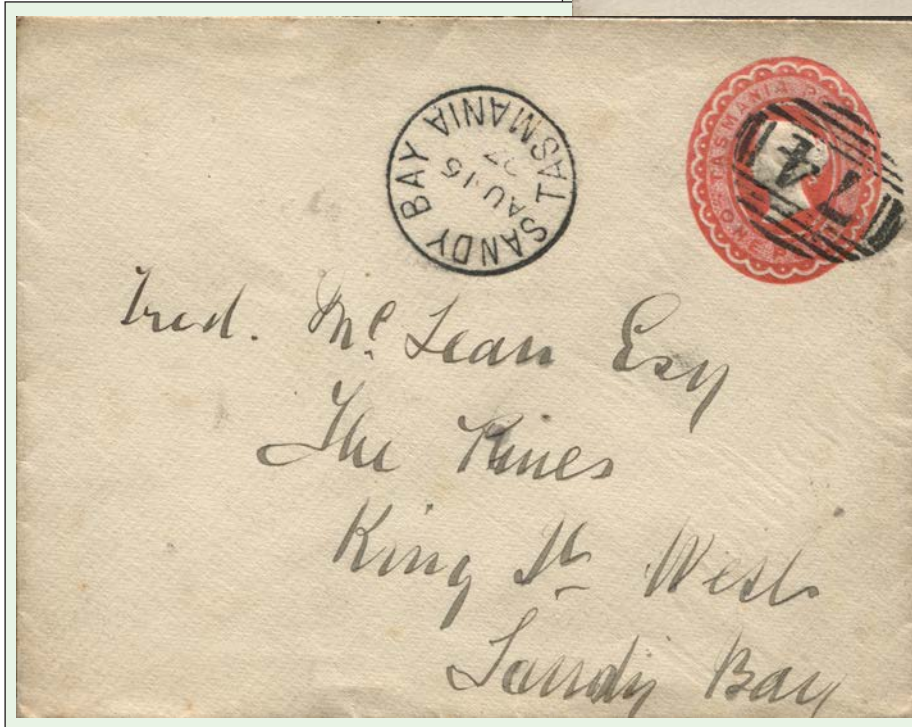
Carmin shade.



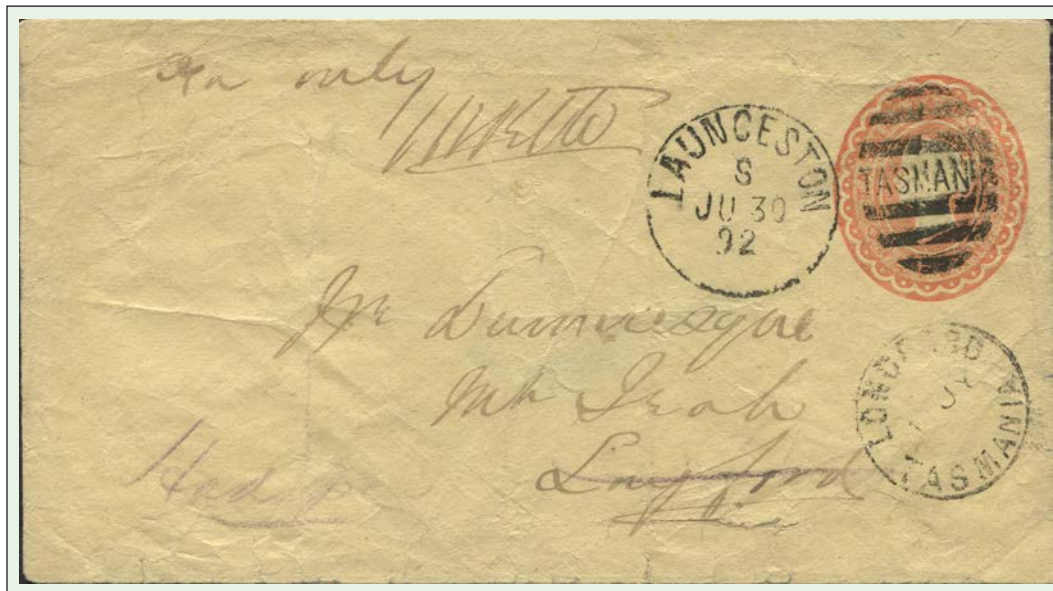
1892-1912 STAMPED TO PRIVATE ORDER ENVELOPES

1D SINGLE & UPDATED USAGES

1899 (October 23) New Town to Denmark
uprated for 2½d foreign letter rate.



1897 (August 16) posted in
Sandy Bay paid for 1d town
letter rate.



1892 (June 30) Launceston to Longford at printed matter rate of 1d.

1892-1912 STAMPED TO PRIVATE ORDER ENVELOPES

1D EMBOSSING UPDATED USAGES

1892 (March 23) New Norfolk
to Sydney uprated for
intercolonial letter rate.



1897 (November 15) Hobart
to London paid for 2½d
overseas rate. London arrival
of 20 December.
Carmine on blue stock.

1901 (April 19) Hobart to New
Zealand at printed matter rate
uprated 3d for registration fee.
Rose red shade on grey lined
stock.



1892-1912 STAMPED TO PRIVATE ORDER ENVELOPES

1D UPDATED LOCAL USAGES



1899 (November 4) Launceston to Penguin uprated for the late fee. Penguin Creek backstamp.



1904 (April 30) Deloraine to Hobart uprated for late fee. Hobart arrival of May 2.

1892-1912 STAMPED TO PRIVATE ORDER ENVELOPES

2D SECOND DIE USE

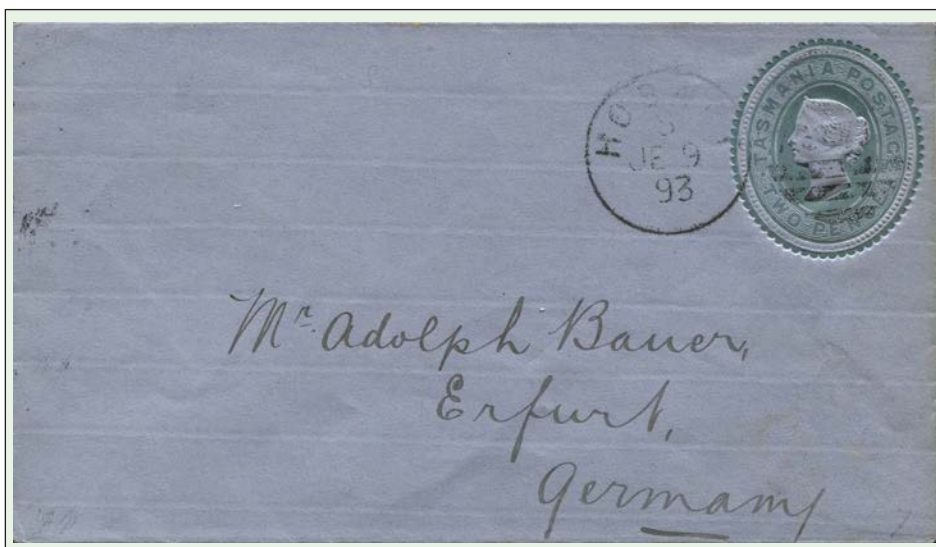


Pale green on white stock

Pale green on brown stock

Pale green on grey stock

1893 (June 9) Hobart to Germany. Underpaid but proving cover for use of the second 2d die in the Colony.

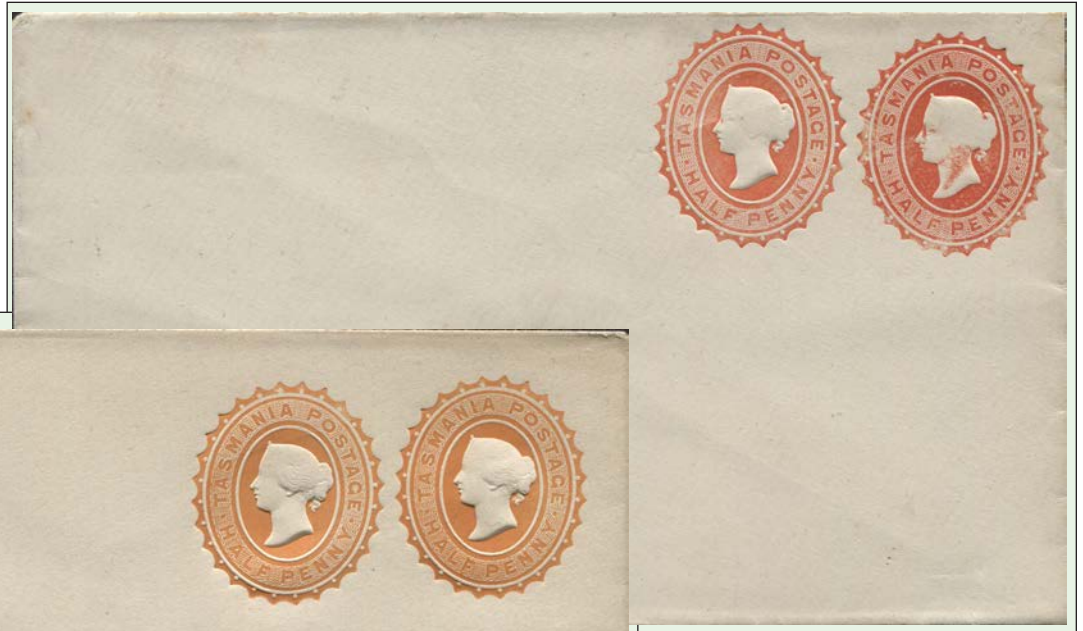


1892 - 1912 STAMPED TO PRIVATE ORDER ENVELOPES

1/2D + 1/2D EMBOSSINGS

The P.O. Regulations, first introduced in 1891, stated that embossed to private order envelopes would only be processed in lots of 480. Observation of the shades and disposition of multiple impressions supports the view that only one impression was applied per item and that to obtain envelopes with multiple impressions required multiple applications in batches of 480. It does not mean that there exists 480 examples of each combination as each batch could contain a variety of envelopes including those already bearing one or more impressions.

1/2d red orange +
1/2d red orange



1/2d red orange + 1/2d red orange
Note disposition of each die.



1893 (September 5) New Norfolk to Sydney at the printed matter rate. Red orange embossing.